

Data sheet

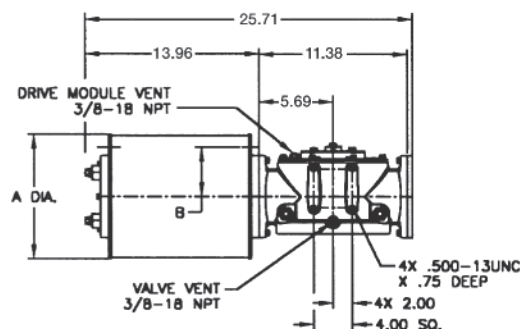
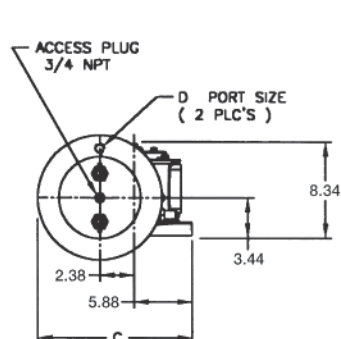
Sheet No.: GPI 3.01 RevB

Date: August 2010

G-Series

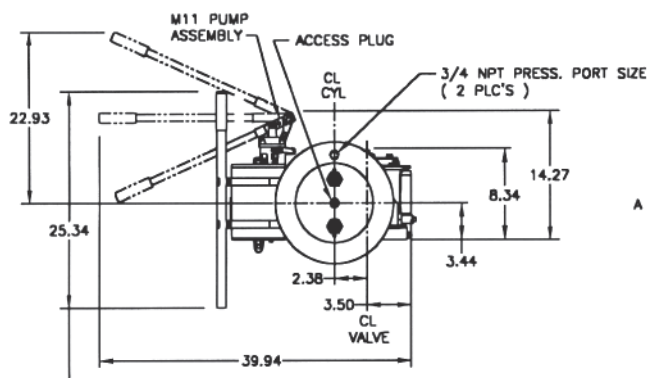
Dimensions – (Pneumatic) In.

Double-Acting Actuators G010XX (CW Model Shown)

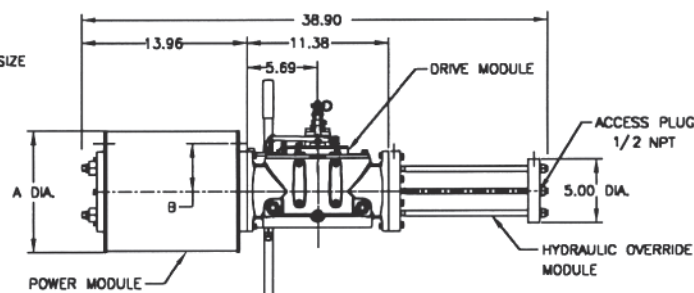


Actuator Model	A	B	C	D
G01008	8.75	3.19	10.25	3/4 NPT
G01009	9.88	3.78	10.82	3/4 NPT
G01010	11.00	4.38	11.38	3/4 NPT
G01012	13.00	5.00	12.38	3/4 NPT
G01014	14.25	5.50	13.00	3/4 NPT

G010XX-M11 (CW Model Shown)



NOTE: PUMP HANDLE
SHOWN STORED, MAY
BE MOVED UP OR DOWN.



Actuator Model	A	B
G01008-M11	8.75	3.19
G01009-M11	9.88	3.78
G01010-M11	11.00	4.38
G01012-M11	13.00	5.00
G01014-M11	14.25	5.50

Note: Not Certified dimensional drawings. Such drawings available on request.
Contact factory with correct model designation and serial number.
All dimensions are expressed in inches.

BETTIS

www.Bettis.com

Copyright © Emerson Process Management. The information in this document is subject to change without notice.
Updated data sheets can be obtained from our website www.bettis.com or from your nearest Valve Automation Center.
USA: +1 281 727 5300 Europe: +31 74 256 1010 Asia-Pacific: +65 6501 4600



EMERSON
Process Management

Data sheet

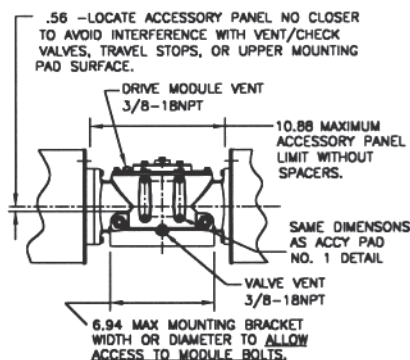
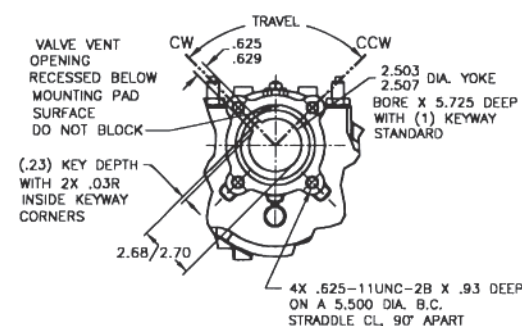
Sheet No.: GPI 3.02 RevB

Date: August 2010

G-Series

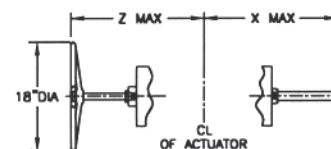
Dimensions – (Pneumatic) In.

Double-Acting Actuators Mounting Pad Detail



ACCESSORY PAD NO. 2 DETAIL

Adjustable End Stops & Jackscrews



	X (-ETS) Extended Travel Stop	X End Stop	Z (M3/M3HW) Jackscrew
Power Module	27.32	20.41	29.55
Blind End Cap Module	15.83	8.92	17.43
Spring Module	47.65	40.31	46.63
Hydraulic Override Module	27.71	21.59	N/A

Note: Not Certified dimensional drawings. Such drawings available on request.
Contact factory with correct model designation and serial number.
All dimensions are expressed in inches.

BETTIS[™]

www.Bettis.com

Copyright © Emerson Process Management. The information in this document is subject to change without notice.
Updated data sheets can be obtained from our website www.bettis.com or from your nearest Valve Automation Center.
USA: +1 281 727 5300 Europe: +31 74 256 1010 Asia-Pacific: +65 6501 4600



EMERSON[™]
Process Management

Data sheet

Sheet No.: GPI 3.03 RevB

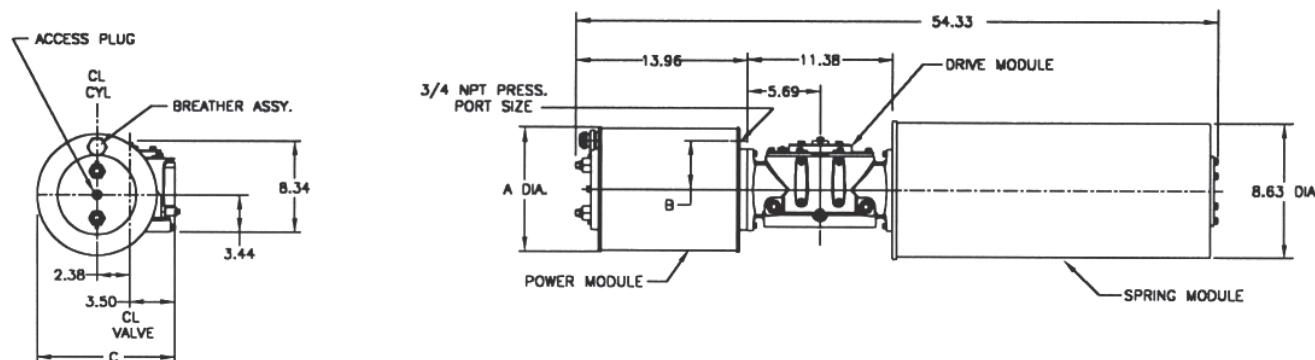
Date: August 2010

G-Series

Dimensions – (Pneumatic) In.

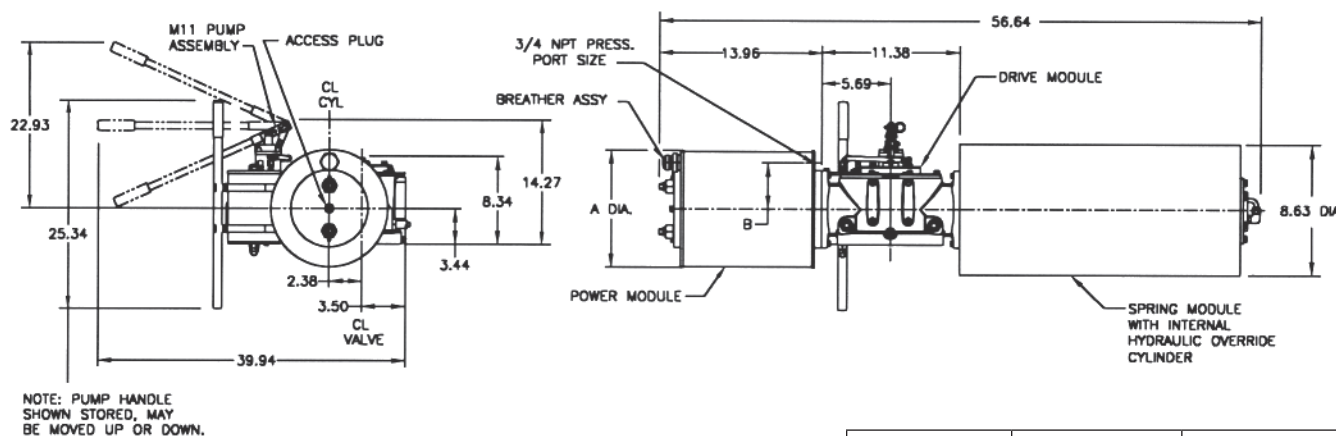
Spring-Return Actuators

G010XX-SR (CW Model Shown)



Actuator Model	A	B	C
G01008-SR	8.75	3.19	10.25
G01009-SR	9.88	3.78	10.82
G01010-SR	11.00	4.38	11.38
G01012-SR	13.00	5.00	12.38
G01014-SR	14.25	5.50	13.00

G010XX-SR-M11 (CW Model Shown)



Actuator Model	A	B
G01008-SR-M11	8.75	3.25
G01009-SR-M11	9.88	3.78
G01010-SR-M11	11.00	4.38
G01012-SR-M11	13.00	5.00
G01014-SR-M11	14.25	5.50

Note: Not Certified dimensional drawings. Such drawings available on request.
Contact factory with correct model designation and serial number.
All dimensions are expressed in inches.

BETTIS

www.Bettis.com

Copyright © Emerson Process Management. The information in this document is subject to change without notice.
Updated data sheets can be obtained from our website www.bettis.com or from your nearest Valve Automation Center.
USA: +1 281 727 5300 Europe: +31 74 256 1010 Asia-Pacific: +65 6501 4600



EMERSON
Process Management

Data sheet

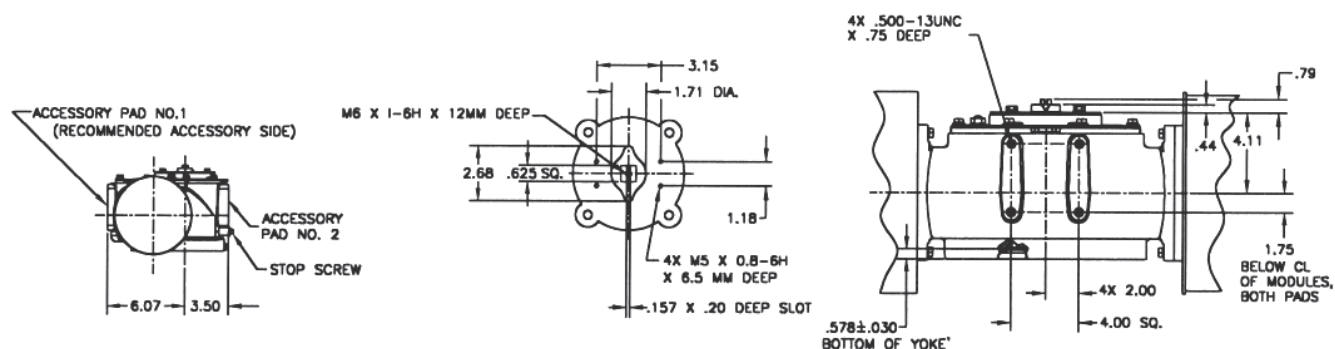
Sheet No.: GPI 3.04 RevB

Date: August 2010

G-Series

Dimensions – (Pneumatic) In.

Spring-Return Actuators Accessory Details



ACCESSORY PAD NO.1 DETAIL

Note: Not Certified dimensional drawings. Such drawings available on request.
Contact factory with correct model designation and serial number.
All dimensions are expressed in inches.

BETTIS[™]

www.Bettis.com

Copyright © Emerson Process Management. The information in this document is subject to change without notice.
Updated data sheets can be obtained from our website www.bettis.com or from your nearest Valve Automation Center.
USA: +1 281 727 5300 Europe: +31 74 256 1010 Asia-Pacific: +65 6501 4600


EMERSON[™]
Process Management

Data sheet

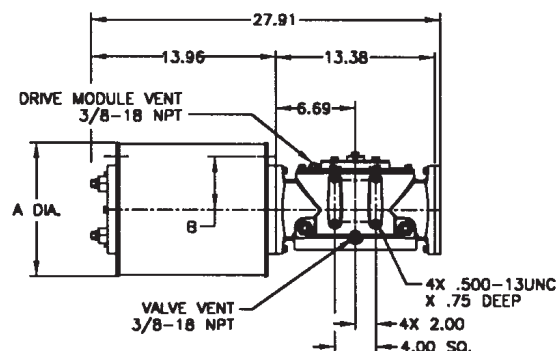
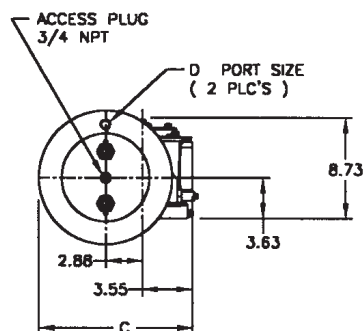
Sheet No.: GPI 3.05 RevB

Date: August 2010

G-Series

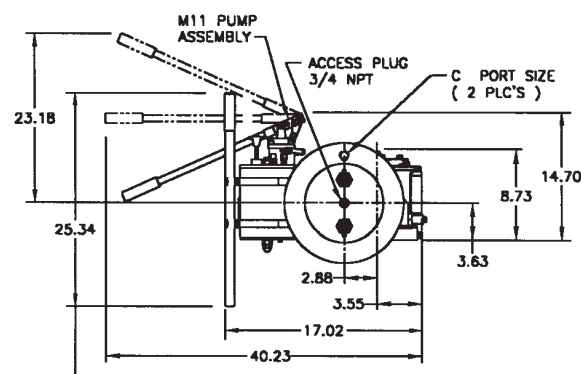
Dimensions – (Pneumatic) In.

Double-Acting Actuators G20XX (CW Model Shown)

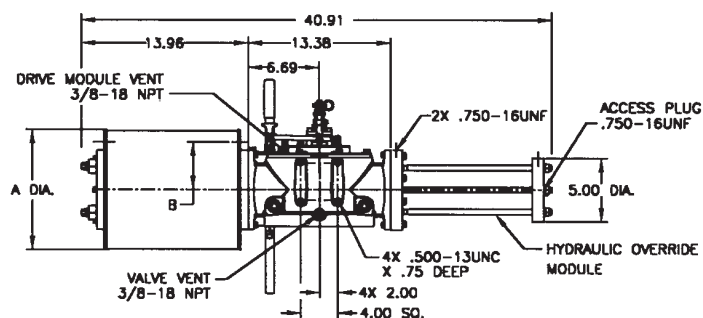


Actuator Model	A	B	C	D
G2009	9.88	3.38	11.38	3/4 NPT
G2010	11.00	4.38	11.97	3/4 NPT
G2012	13.00	5.00	12.93	3/4 NPT
G2014	14.25	5.50	13.56	3/4 NPT
G2016	16.25	6.25	14.56	3/4 NPT

G20XX-M11 (CW Model Shown)



NOTE: PUMP HANDLE
SHOWN STORED, MAY
BE MOVED UP OR DOWN.



Actuator Model	A	B	C
G2009-M11	9.88	3.38	3/4 NPT
G2010-M11	11.00	4.38	3/4 NPT
G2012-M11	13.00	5.00	3/4 NPT
G2014-M11	14.25	5.50	3/4 NPT
G2016-M11	16.25	6.25	3/4 NPT

Note: Not Certified dimensional drawings. Such drawings available on request.
Contact factory with correct model designation and serial number.
All dimensions are expressed in inches.

BETTIS

www.Bettis.com

Copyright © Emerson Process Management. The information in this document is subject to change without notice.
Updated data sheets can be obtained from our website www.bettis.com or from your nearest Valve Automation Center.
USA: +1 281 727 5300 Europe: +31 74 256 1010 Asia-Pacific: +65 6501 4600



EMERSON
Process Management

Data sheet

Sheet No.: GPI 3.06 RevB

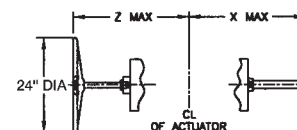
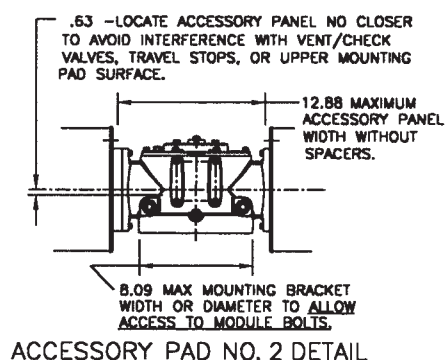
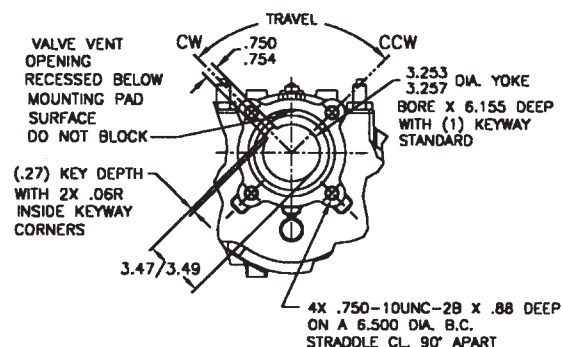
Date: August 2010

G-Series

Dimensions – (Pneumatic) In.

Double-Acting Actuators Valve/Accessory Mounting Details

Adjustable End Stops & Jackscrews



	X (-ETS) Extended Travel Stop	X End Stop	Z (M3/M3HW) Jackscrew
Power Module	28.32	21.41	35.07
Blind End Cap Module	16.83	9.92	22.55
Spring Module	48.22	41.31	50.35

Note: Not Certified dimensional drawings. Such drawings available on request.
Contact factory with correct model designation and serial number.
All dimensions are expressed in inches.

BETTIS

www.Bettis.com

Copyright © Emerson Process Management. The information in this document is subject to change without notice.
Updated data sheets can be obtained from our website www.bettis.com or from your nearest Valve Automation Center.
USA: +1 281 727 5300 Europe: +31 74 256 1010 Asia-Pacific: +65 6501 4600



EMERSON
Process Management

Data sheet

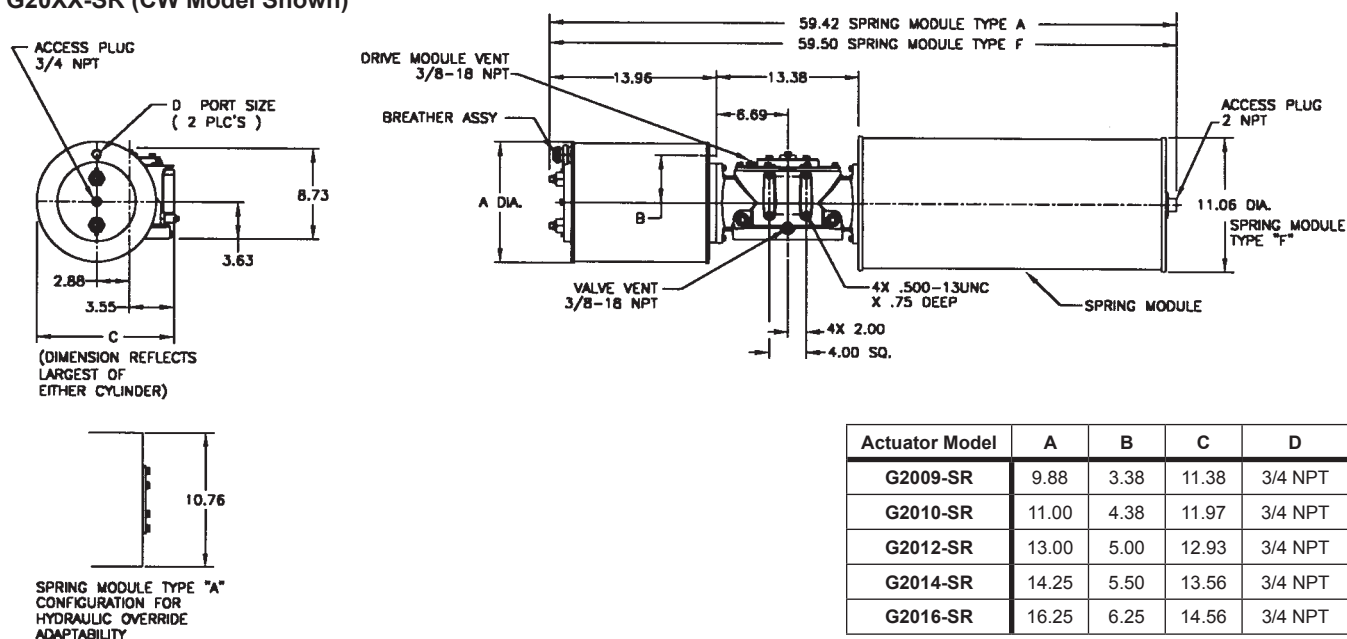
Sheet No.: GPI 3.07 RevB

Date: August 2010

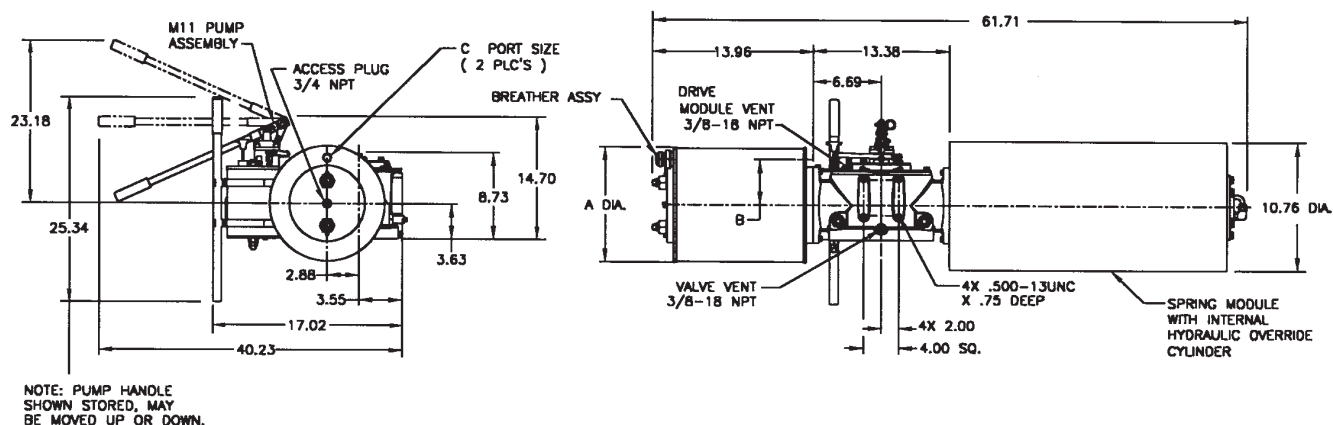
G-Series

Dimensions – (Pneumatic) In.

Spring-Return Actuators G20XX-SR (CW Model Shown)



G20XX-SR-M11 (CW Model Shown)



Note: Not Certified dimensional drawings. Such drawings available on request.
Contact factory with correct model designation and serial number.
All dimensions are expressed in inches.

BETTIS

www.Bettis.com

Copyright © Emerson Process Management. The information in this document is subject to change without notice.
Updated data sheets can be obtained from our website www.bettis.com or from your nearest Valve Automation Center.
USA: +1 281 727 5300 Europe: +31 74 256 1010 Asia-Pacific: +65 6501 4600



EMERSON
Process Management

Data sheet

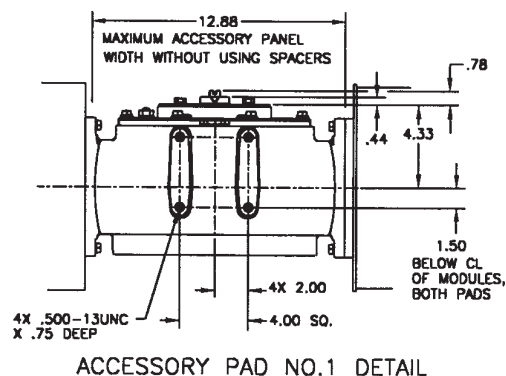
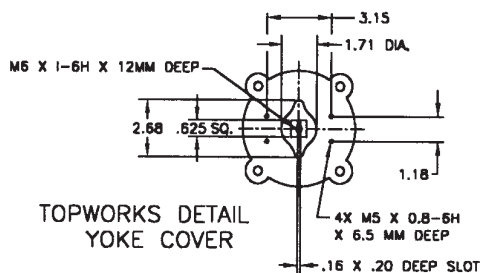
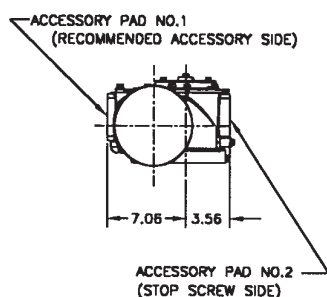
Sheet No.: GPI 3.08 RevB

Date: August 2010

G-Series

Dimensions – (Pneumatic) In.

Spring-Return Actuators Accessory Details



Note: Not Certified dimensional drawings. Such drawings available on request.
Contact factory with correct model designation and serial number.
All dimensions are expressed in inches.

BETTIS[™]

www.Bettis.com

Copyright © Emerson Process Management. The information in this document is subject to change without notice.
Updated data sheets can be obtained from our website www.bettis.com or from your nearest Valve Automation Center.
USA: +1 281 727 5300 Europe: +31 74 256 1010 Asia-Pacific: +65 6501 4600


EMERSON[™]
Process Management

Data sheet

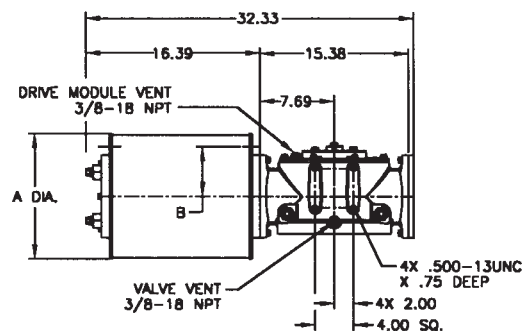
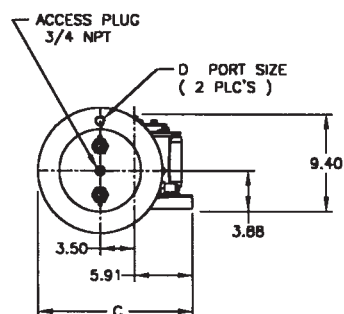
Sheet No.: GPI 3.09 RevB

Date: August 2010

G-Series

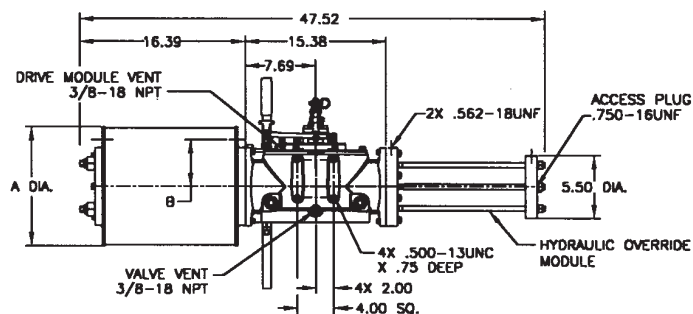
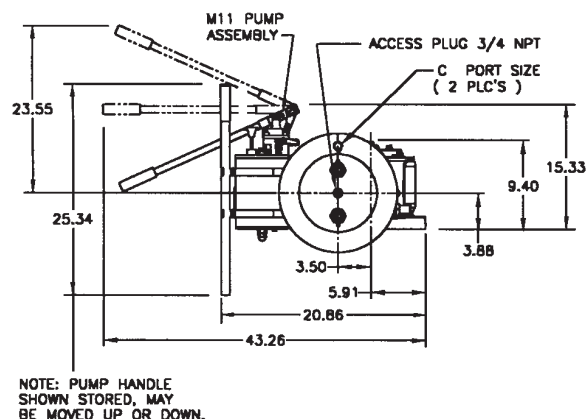
Dimensions – (Pneumatic) In.

Double-Acting Actuators G30XX (CW Model Shown)



Actuator Model	A	B	C	D
G3010	11.00	4.38	14.91	3/4 NPT
G3012	13.00	5.19	15.91	3/4 NPT
G3014	14.25	5.68	16.53	3/4 NPT
G3016	16.25	6.25	17.53	3/4 NPT
G3020	20.25	8.00	19.53	3/4 NPT

G30XX-M11 (CW Model Shown)



Actuator Model	A	B	C
G3010-M11	11.00	4.38	3/4 NPT
G3012-M11	13.00	5.19	3/4 NPT
G3014-M11	14.25	5.68	3/4 NPT
G3016-M11	16.25	6.25	3/4 NPT
G3020-M11	20.25	8.00	3/4 NPT

Note: Not Certified dimensional drawings. Such drawings available on request.
Contact factory with correct model designation and serial number.
All dimensions are expressed in inches.

BETTIS

www.Bettis.com

Copyright © Emerson Process Management. The information in this document is subject to change without notice.
Updated data sheets can be obtained from our website www.bettis.com or from your nearest Valve Automation Center.
USA: +1 281 727 5300 Europe: +31 74 256 1010 Asia-Pacific: +65 6501 4600



EMERSON
Process Management

Data sheet

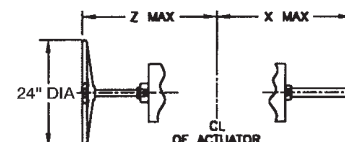
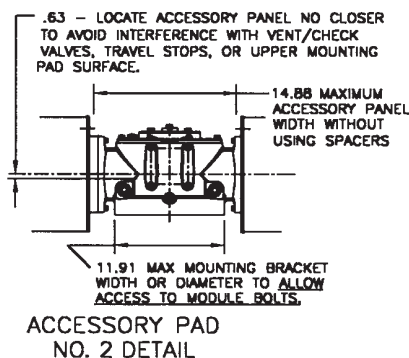
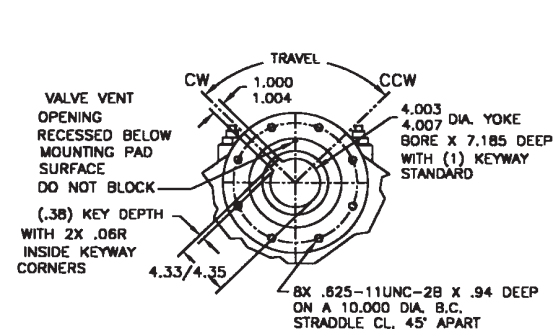
Sheet No.: GPI 3.10 RevB

Date: August 2010

G-Series

Dimensions – (Pneumatic) In.

Double-Acting Actuators Valve/Accessory Mounting Details



Adjustable End Stops & Jackscrews

	X (-ETS) Extended Travel Stop	X End Stop	Z (M3/M3HW) Jackscrew
Power Module	33.09	24.53	36.94
Blind End Cap Module	19.57	11.10	22.86
Spring Module	53.30	44.74	55.00

Note: Not Certified dimensional drawings. Such drawings available on request.
Contact factory with correct model designation and serial number.
All dimensions are expressed in inches.

BETTIS™

www.Bettis.com

Copyright © Emerson Process Management. The information in this document is subject to change without notice.
Updated data sheets can be obtained from our website www.bettis.com or from your nearest Valve Automation Center.
USA: +1 281 727 5300 Europe: +31 74 256 1010 Asia-Pacific: +65 6501 4600



EMERSON™

Process Management

Data sheet

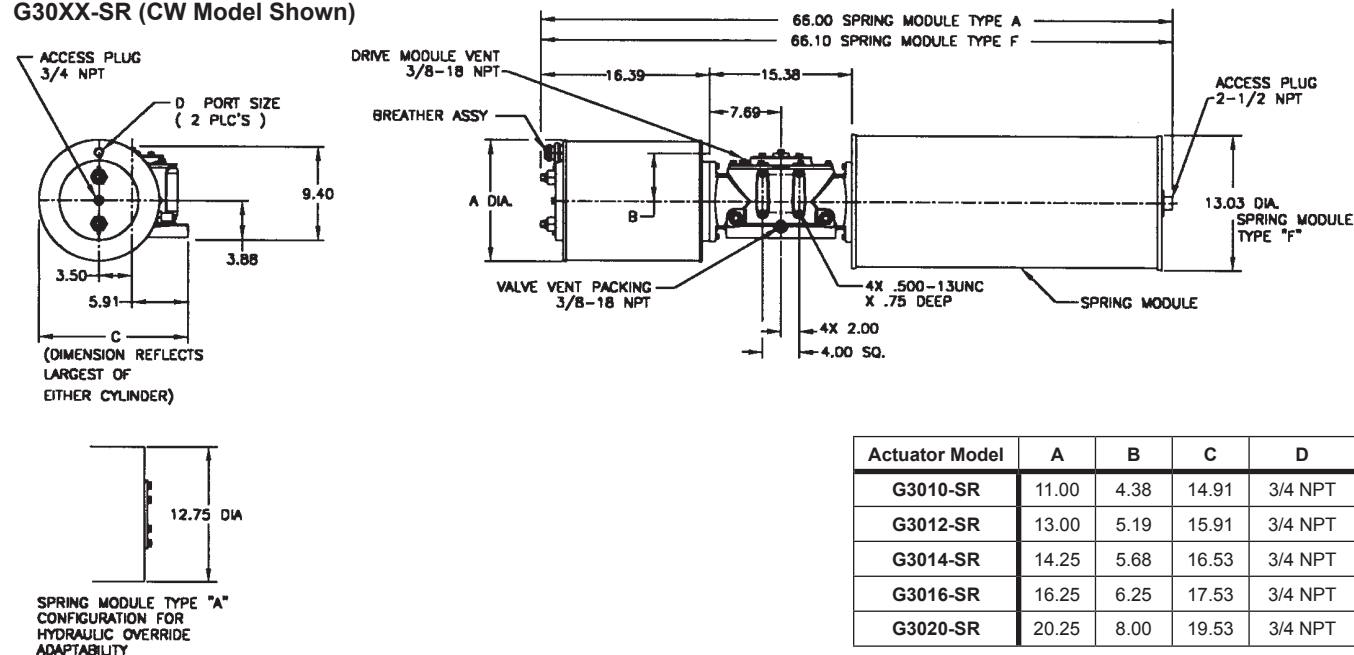
Sheet No.: GPI 3.11 RevB

Date: August 2010

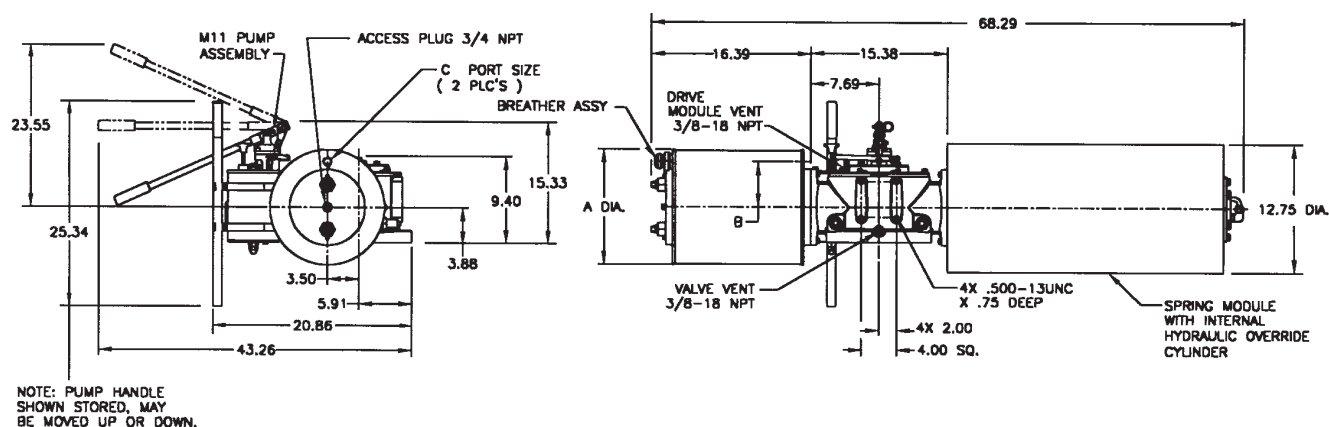
G-Series

Dimensions – (Pneumatic) In.

Spring-Return Actuators G30XX-SR (CW Model Shown)



G30XX-SR-M11 (CW Model Shown)



Note: Not Certified dimensional drawings. Such drawings available on request.
Contact factory with correct model designation and serial number.
All dimensions are expressed in inches.

Actuator Model	A	B	C
G3010-SR-M11	11.00	4.38	3/4 NPT
G3012-SR-M11	13.00	5.19	3/4 NPT
G3014-SR-M11	14.25	5.68	3/4 NPT
G3016-SR-M11	16.25	6.25	3/4 NPT
G3020-SR-M11	20.25	8.00	3/4 NPT

BETTIS

www.Bettis.com

Copyright © Emerson Process Management. The information in this document is subject to change without notice.
Updated data sheets can be obtained from our website www.bettis.com or from your nearest Valve Automation Center.
USA: +1 281 727 5300 Europe: +31 74 256 1010 Asia-Pacific: +65 6501 4600

EMERSON
Process Management

Data sheet

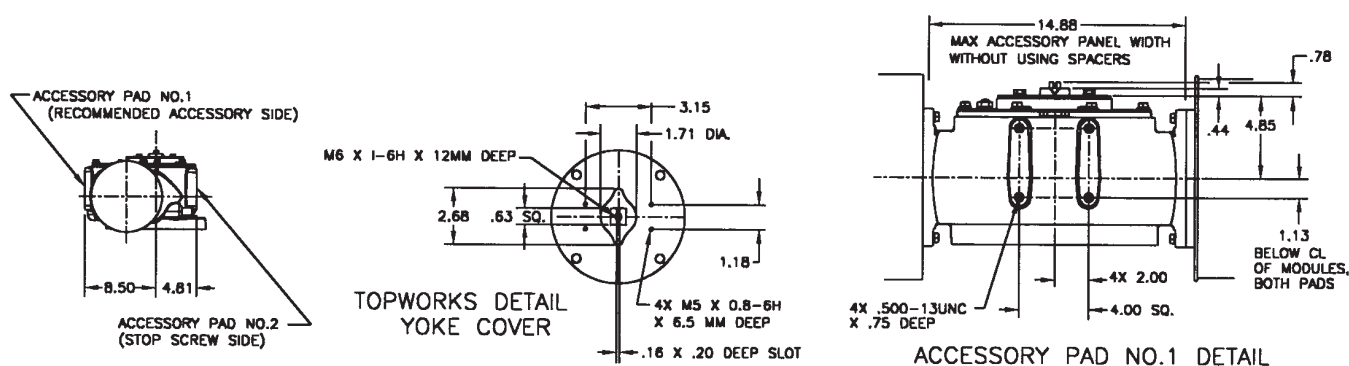
Sheet No.: GPI 3.12 RevB

Date: August 2010

G-Series

Dimensions – (Pneumatic) In.

Spring-Return Actuators Accessory Details



Note: Not Certified dimensional drawings. Such drawings available on request.
Contact factory with correct model designation and serial number.
All dimensions are expressed in inches.

BETTIS[™]

www.Bettis.com

Copyright © Emerson Process Management. The information in this document is subject to change without notice.
Updated data sheets can be obtained from our website www.bettis.com or from your nearest Valve Automation Center.
USA: +1 281 727 5300 Europe: +31 74 256 1010 Asia-Pacific: +65 6501 4600



EMERSON[™]
Process Management

Data sheet

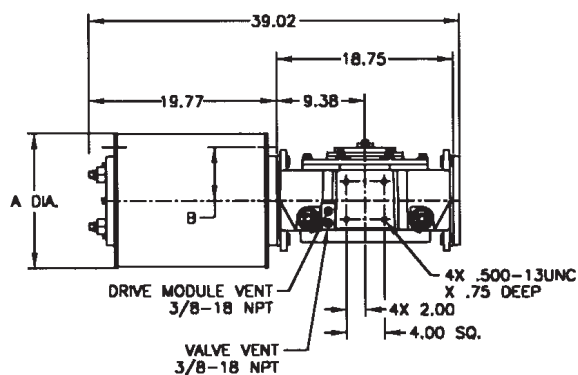
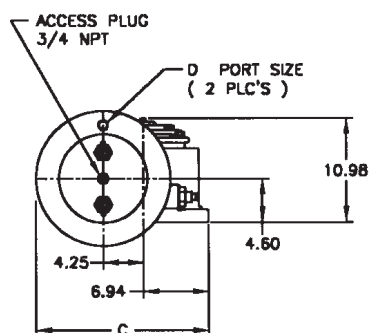
Sheet No.: GPI 3.13 RevB

Date: August 2010

G-Series

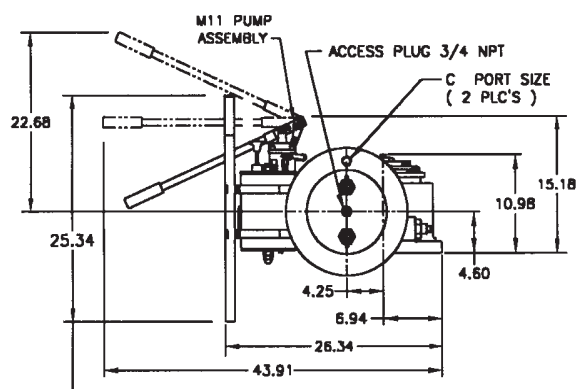
Dimensions – (Pneumatic) In.

Double-Acting Actuators G40XX (CW Model Shown)

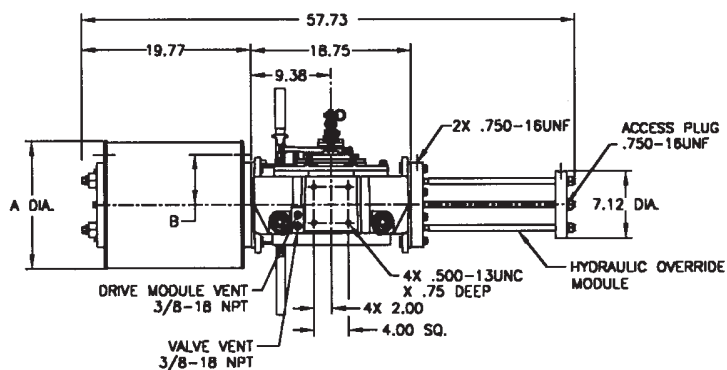


Actuator Model	A	B	C	D
G4012	13.00	5.44	17.69	3/4 NPT
G4014	14.25	5.63	18.32	3/4 NPT
G4016	16.25	6.25	19.32	3/4 NPT
G4020	20.25	8.13	21.32	3/4 NPT
G4024	24.25	9.63	23.32	3/4 NPT
G4028	29.00	11.50	25.69	1.0 NPT

G40XX-M11 (CW Model Shown)



NOTE: PUMP HANDLE
SHOWN STORED, MAY
BE MOVED UP OR DOWN.



Actuator Model	A	B	C
G4012-M11	13.00	5.44	3/4 NPT
G4014-M11	14.25	5.63	3/4 NPT
G4016-M11	16.25	6.25	3/4 NPT
G4020-M11	20.25	8.13	3/4 NPT
G4024-M11	24.25	9.63	3/4 NPT
G4028-M11	29.00	11.50	1.0 NPT

Note: Not Certified dimensional drawings. Such drawings available on request.
Contact factory with correct model designation and serial number.
All dimensions are expressed in inches.

BETTIS

www.Bettis.com

Copyright © Emerson Process Management. The information in this document is subject to change without notice.
Updated data sheets can be obtained from our website www.bettis.com or from your nearest Valve Automation Center.
USA: +1 281 727 5300 Europe: +31 74 256 1010 Asia-Pacific: +65 6501 4600



EMERSON
Process Management

Data sheet

Sheet No.: GPI 3.14 RevB

Date: August 2010

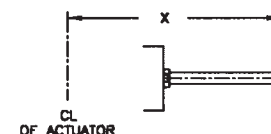
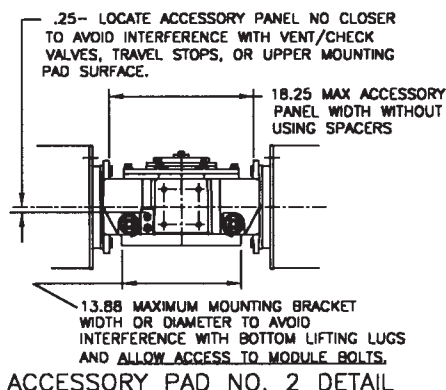
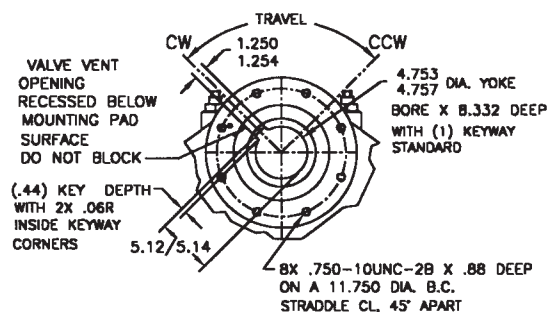
G-Series

Dimensions – (Pneumatic) In.

Double-Acting Actuators

Valve/Accessory Mounting Details

Adjustable End Stops



	X Extended Travel Stop	X End Stop
Power Module	39.74	31.12
Blind End Cap Module	23.32	14.70
Spring Module	60.61	52.00

Note: Not Certified dimensional drawings. Such drawings available on request.
Contact factory with correct model designation and serial number.
All dimensions are expressed in inches.

BETTIS

www.Bettis.com

Copyright © Emerson Process Management. The information in this document is subject to change without notice.
Updated data sheets can be obtained from our website www.bettis.com or from your nearest Valve Automation Center.
USA: +1 281 727 5300 Europe: +31 74 256 1010 Asia-Pacific: +65 6501 4600



EMERSON
Process Management

Data sheet

Sheet No.: GPI 3.15 RevB

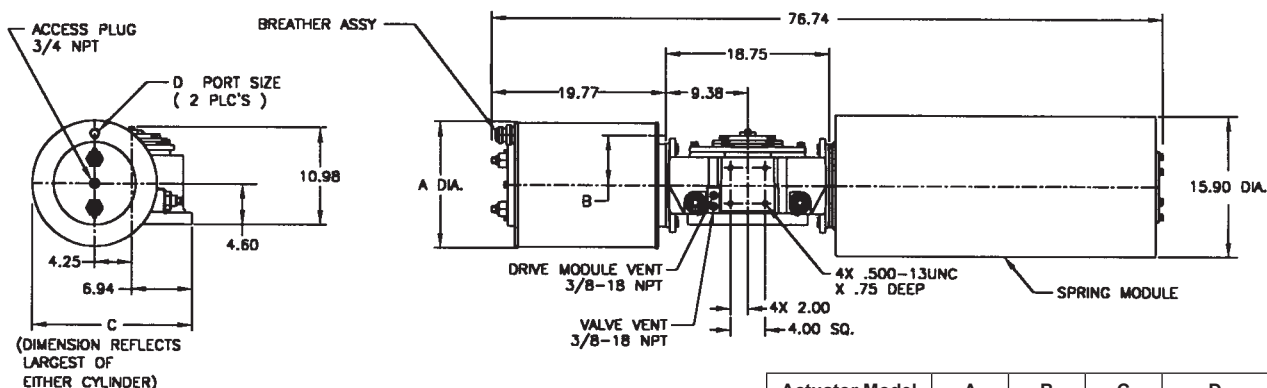
Date: August 2010

G-Series

Dimensions – (Pneumatic) In.

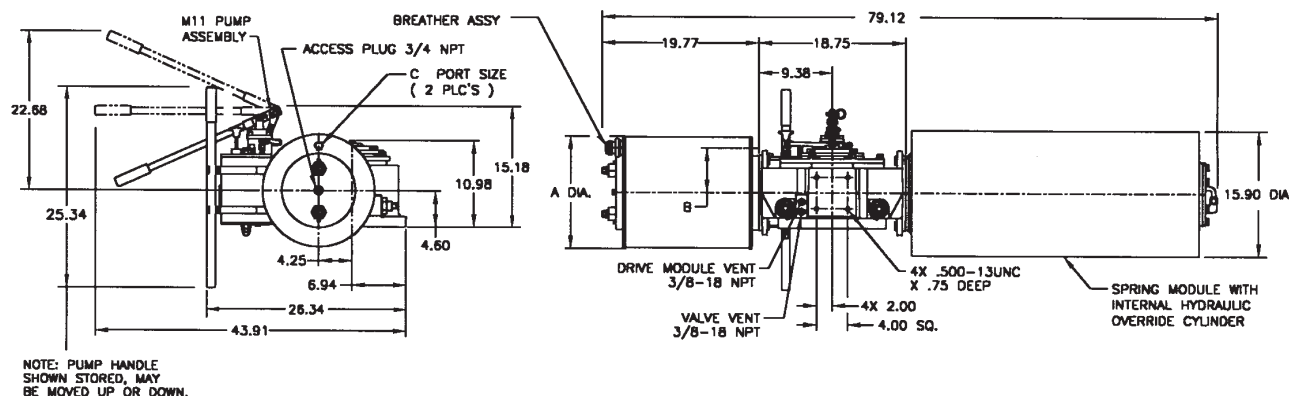
Spring-Return Actuators

G40XX-SRX (CW Model Shown)



Actuator Model	A	B	C	D
G4012-SR	13.00	5.44	19.14	3/4 NPT
G4014-SR	14.25	5.63	19.14	3/4 NPT
G4016-SR	16.25	6.25	19.32	3/4 NPT
G4020-SR	20.25	8.13	21.32	3/4 NPT
G4024-SR	24.25	9.63	23.32	3/4 NPT
G4028-SR	29.00	11.50	25.69	1.0 NPT

G40XX-SRX-M11 (CW Model Shown)



Actuator Model	A	B	C
G4012-SR-M11	13.00	5.44	3/4 NPT
G4014-SR-M11	14.25	5.63	3/4 NPT
G4016-SR-M11	16.25	6.25	3/4 NPT
G4020-SR-M11	20.25	8.13	3/4 NPT
G4024-SR-M11	24.25	9.63	3/4 NPT
G4028-SR-M11	29.00	11.50	1.0 NPT

Note: Not Certified dimensional drawings. Such drawings available on request.
Contact factory with correct model designation and serial number.
All dimensions are expressed in inches.

BETTIS

www.Bettis.com

Copyright © Emerson Process Management. The information in this document is subject to change without notice.
Updated data sheets can be obtained from our website www.bettis.com or from your nearest Valve Automation Center.
USA: +1 281 727 5300 Europe: +31 74 256 1010 Asia-Pacific: +65 6501 4600



EMERSON
Process Management

Data sheet

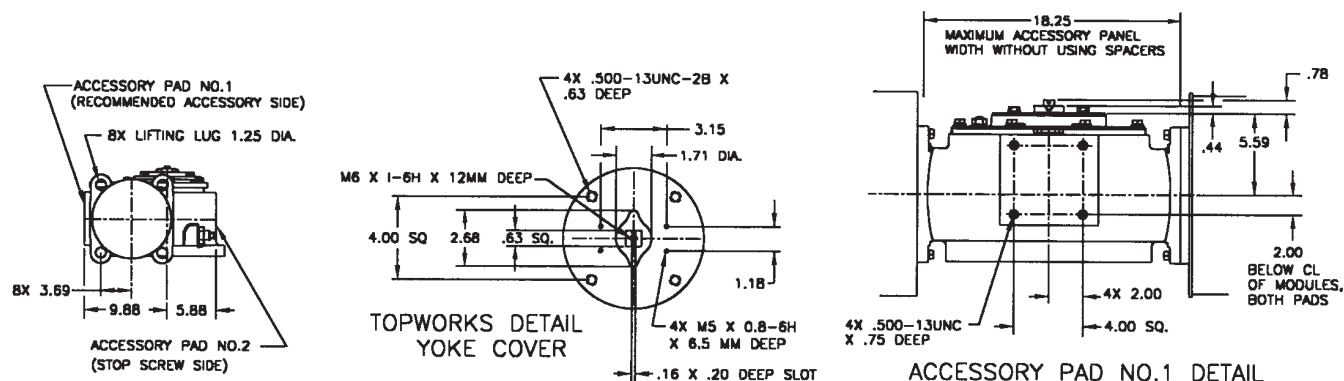
Sheet No.: GPI 3.16 RevB

Date: August 2010

G-Series

Dimensions – (Pneumatic) In.

Spring-Return Actuators Lug/Accessory Details



Note: Not Certified dimensional drawings. Such drawings available on request.
Contact factory with correct model designation and serial number.
All dimensions are expressed in inches.

BETTIS[™]

www.Bettis.com

Copyright © Emerson Process Management. The information in this document is subject to change without notice.
Updated data sheets can be obtained from our website www.bettis.com or from your nearest Valve Automation Center.
USA: +1 281 727 5300 Europe: +31 74 256 1010 Asia-Pacific: +65 6501 4600


EMERSON[™]
Process Management

Data sheet

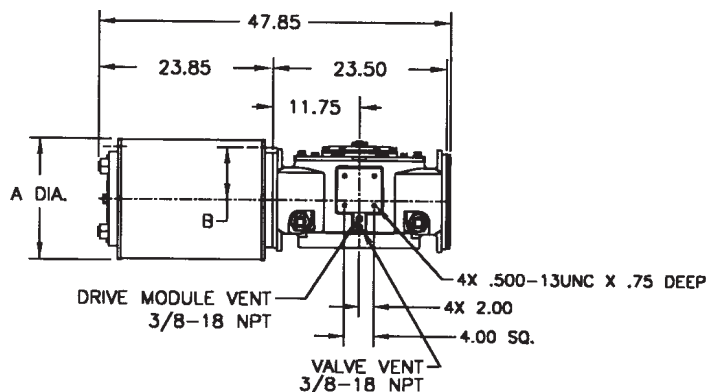
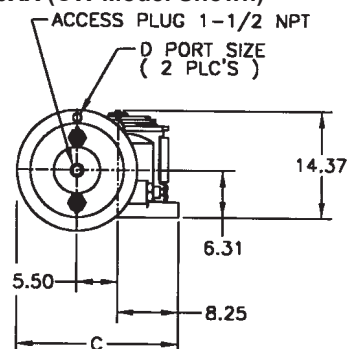
Sheet No.: GPI 3.17 RevB

Date: August 2010

G-Series

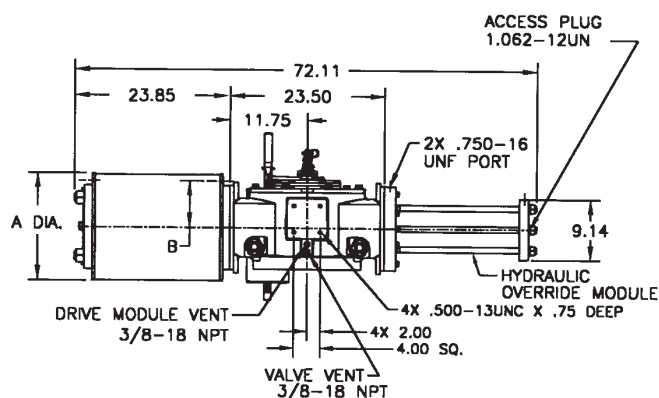
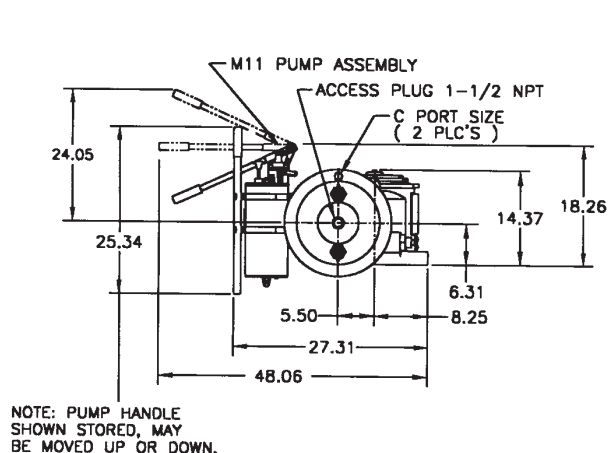
Dimensions – (Pneumatic) In.

Double-Acting Actuators G50XX (CW Model Shown)



Actuator Model	A	B	C	D
G5016	16.25	7.06	21.88	3/4 NPT
G5020	20.25	8.00	23.88	3/4 NPT
G5024	24.25	9.25	25.88	1 NPT
G5028	29.00	12.06	28.25	1 NPT
G5032	33.00	14.00	30.25	1-1/2 NPT
G5036	37.25	16.00	32.38	1-1/2 NPT

G50XX-M11 (CW Model Shown)



Actuator Model	A	B	C
G5016-M11	16.25	7.06	3/4 NPT
G5020-M11	20.25	8.00	3/4 NPT
G5024-M11	24.25	9.25	1 NPT
G5028-M11	29.00	12.06	1 NPT
G5032-M11	33.00	14.00	1-1/2 NPT
G5036-M11	37.25	16.00	1-1/2 NPT

Note: Not Certified dimensional drawings. Such drawings available on request.
Contact factory with correct model designation and serial number.
All dimensions are expressed in inches.

BETTIS

www.Bettis.com

Copyright © Emerson Process Management. The information in this document is subject to change without notice.
Updated data sheets can be obtained from our website www.bettis.com or from your nearest Valve Automation Center.
USA: +1 281 727 5300 Europe: +31 74 256 1010 Asia-Pacific: +65 6501 4600

EMERSON
Process Management

Data sheet

Sheet No.: GPI 3.18 RevB

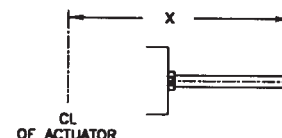
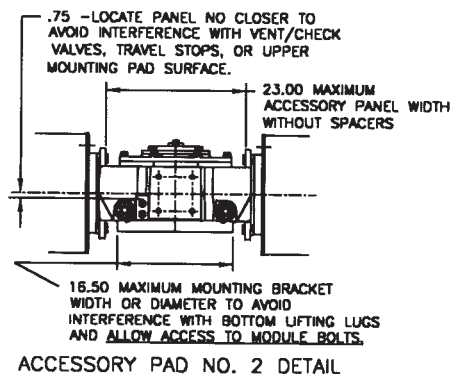
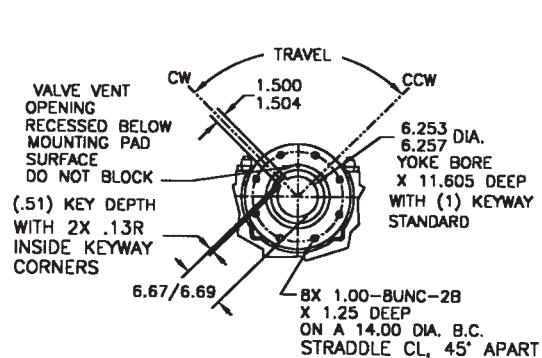
Date: August 2010

G-Series

Dimensions – (Pneumatic) In.

Double-Acting Actuators

Valve/Accessory Mounting Details



Adjustable End Stops

	X Extended Travel Stop	X End Stop
Power Module	50.07	38.58
Blind End Cap Module	28.25	17.38
Spring Module	70.50	42.48

Note: Not Certified dimensional drawings. Such drawings available on request.
Contact factory with correct model designation and serial number.
All dimensions are expressed in inches.

BETTIS™

www.Bettis.com

Copyright © Emerson Process Management. The information in this document is subject to change without notice.
Updated data sheets can be obtained from our website www.bettis.com or from your nearest Valve Automation Center.
USA: +1 281 727 5300 Europe: +31 74 256 1010 Asia-Pacific: +65 6501 4600

EMERSON™

Process Management

Data sheet

Sheet No.: GPI 3.19 RevB

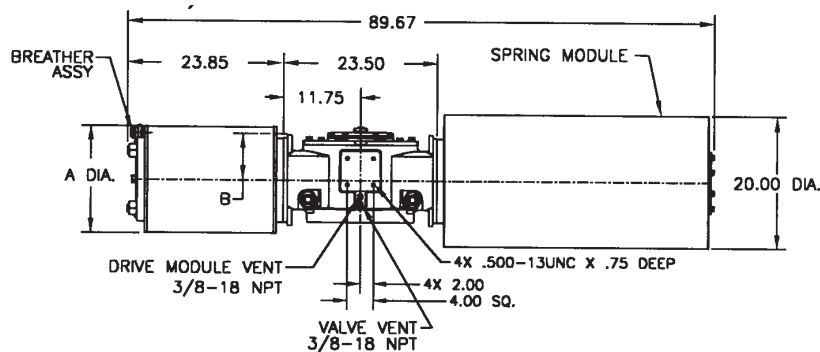
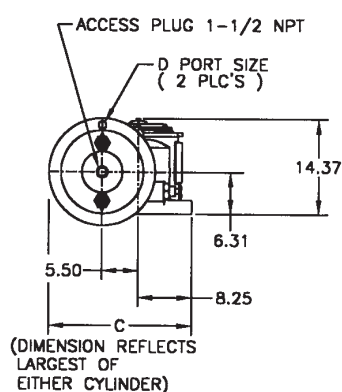
Date: August 2010

G-Series

Dimensions – (Pneumatic) In.

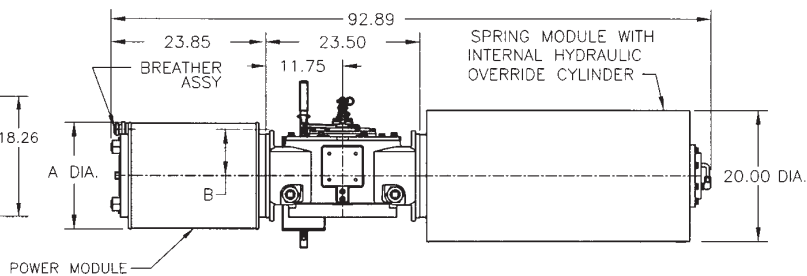
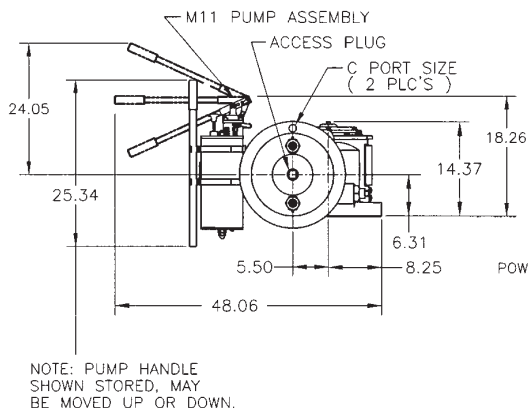
Spring-Return Actuators

G50XX-SR (CW Model Shown)



Actuator Model	A	B	C	D
G5016-SR	16.25	7.06	23.75	3/4 NPT
G5020-SR	20.25	8.00	23.88	3/4 NPT
G5024-SR	24.25	9.25	25.88	1 NPT
G5028-SR	29.00	12.06	28.25	1 NPT
G5032-SR	33.00	14.00	30.25	1-1/2 NPT
G5036-SR	37.25	16.00	32.38	1-1/2 NPT

G50XX-SR-M11 (CW Model Shown)



Actuator Model	A	B	C
G5016-SR-M11	16.25	7.06	3/4 NPT
G5020-SR-M11	20.25	8.00	3/4 NPT
G5024-SR-M11	24.25	9.25	1 NPT
G5028-SR-M11	29.00	12.06	1 NPT
G5032-SR-M11	33.00	14.00	1-1/2 NPT
G5036-SR-M11	37.25	16.00	1-1/2 NPT

Note: Not Certified dimensional drawings. Such drawings available on request.
Contact factory with correct model designation and serial number.
All dimensions are expressed in inches.

BETTIS

www.Bettis.com

Copyright © Emerson Process Management. The information in this document is subject to change without notice.
Updated data sheets can be obtained from our website www.bettis.com or from your nearest Valve Automation Center.
USA: +1 281 727 5300 Europe: +31 74 256 1010 Asia-Pacific: +65 6501 4600



EMERSON
Process Management

Data sheet

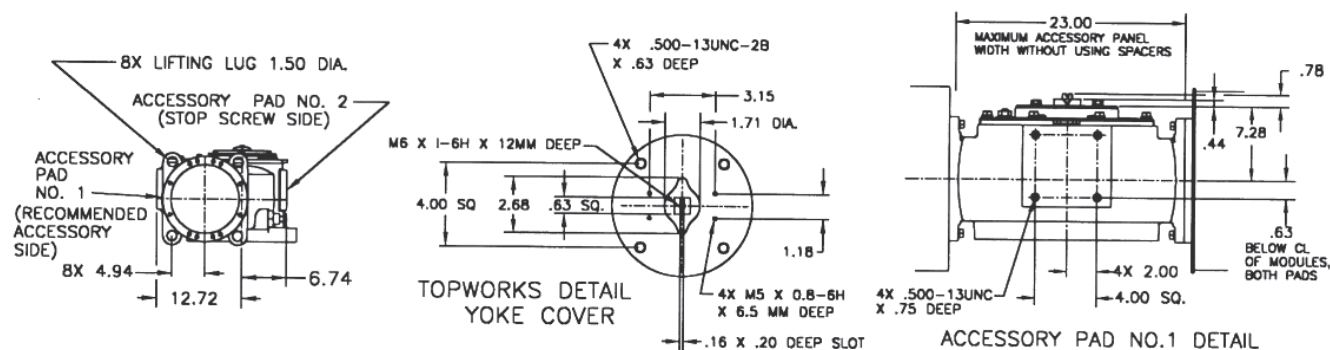
Sheet No.: GPI 3.20 RevB

Date: August 2010

G-Series

Dimensions – (Pneumatic) In.

Spring-Return Actuators Lug/Accessory Details



Note: Not Certified dimensional drawings. Such drawings available on request.
Contact factory with correct model designation and serial number.
All dimensions are expressed in inches.

BETTIS[™]

www.Bettis.com

Copyright © Emerson Process Management. The information in this document is subject to change without notice.
Updated data sheets can be obtained from our website www.bettis.com or from your nearest Valve Automation Center.
USA: +1 281 727 5300 Europe: +31 74 256 1010 Asia-Pacific: +65 6501 4600



EMERSON[™]
Process Management

Data sheet

Sheet No.: GPI 3.21 RevB

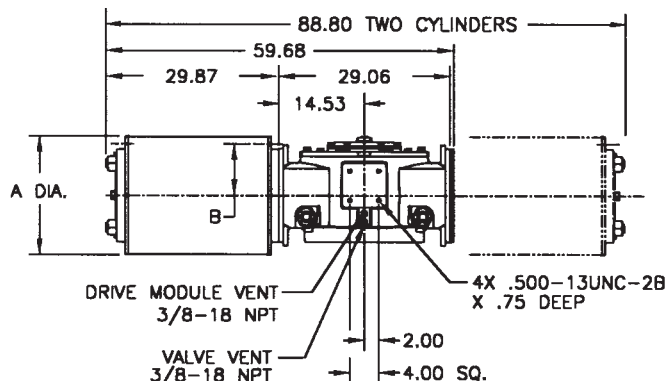
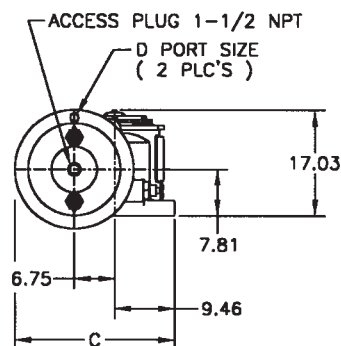
Date: August 2010

G-Series

Dimensions – (Pneumatic) In.

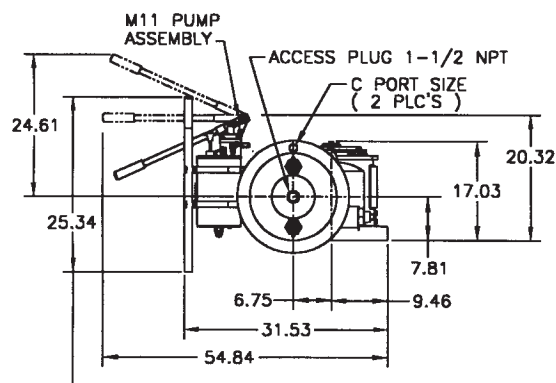
Double-Acting Actuators

G70XX or G702XX (CW Model Shown)

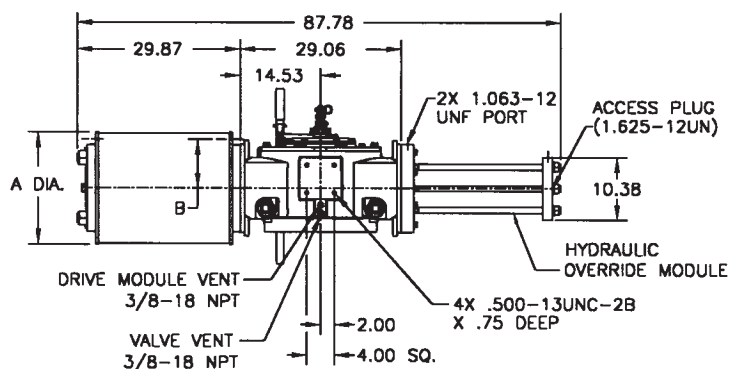


Actuator Model	A	B	C	D
G7020	20.25	8.75	26.34	3/4 NPT
G7024	24.25	9.63	28.34	1 NPT
G7028	29.00	11.25	30.71	1-1/2 NPT
G7032	33.00	14.00	32.71	1-1/2 NPT
G7036	37.25	16.00	34.84	1-1/2 NPT
G70228	29.00	11.25	30.71	1-1/2 NPT

G70XX-M11 (CW Model Shown)



NOTE: PUMP HANDLE SHOWN STORED, MAY BE MOVED UP OR DOWN.



Actuator Model	A	B	C
G7020-M11	20.25	8.75	3/4 NPT
G7024-M11	24.25	9.63	1 NPT
G7028-M11	29.00	11.25	1-1/2 NPT
G7032-M11	33.00	14.00	1-1/2 NPT
G7036-M11	37.25	16.00	1-1/2 NPT

Note: Not Certified dimensional drawings. Such drawings available on request.
Contact factory with correct model designation and serial number.
All dimensions are expressed in inches.

BETTIS

www.Bettis.com

Copyright © Emerson Process Management. The information in this document is subject to change without notice.
Updated data sheets can be obtained from our website www.bettis.com or from your nearest Valve Automation Center.
USA: +1 281 727 5300 Europe: +31 74 256 1010 Asia-Pacific: +65 6501 4600



EMERSON
Process Management

Data sheet

Sheet No.: GPI 3.22 RevB

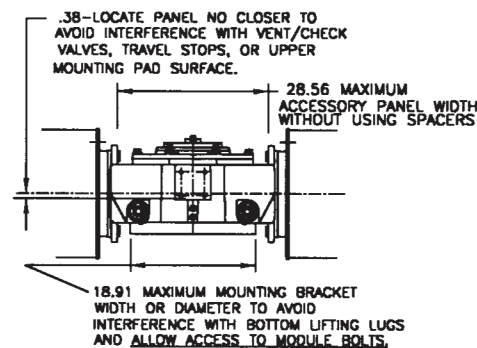
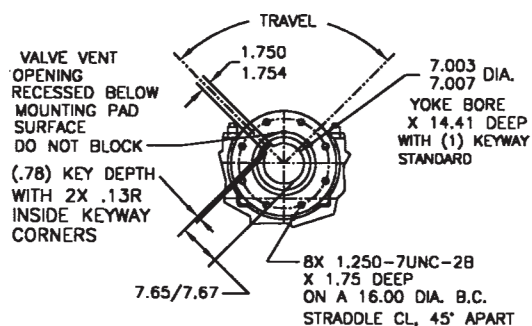
Date: August 2010

G-Series

Dimensions – (Pneumatic) In.

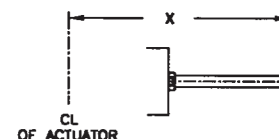
Double-Acting Actuators

Valve/Accessory Mounting Details



ACCESSORY PAD NO. 2 DETAIL

Adjustable End Stops



	X Extended Travel Stop	X End Stop
Power Module	60.97	46.72
Blind End Cap Module	35.53	21.28
Spring Module	91.10	54.44

Note: Not Certified dimensional drawings. Such drawings available on request.
Contact factory with correct model designation and serial number.
All dimensions are expressed in inches.

BETTIS[™]

www.Bettis.com

Copyright © Emerson Process Management. The information in this document is subject to change without notice.
Updated data sheets can be obtained from our website www.bettis.com or from your nearest Valve Automation Center.
USA: +1 281 727 5300 Europe: +31 74 256 1010 Asia-Pacific: +65 6501 4600



EMERSON[™]
Process Management

Data sheet

Sheet No.: GPI 3.23 RevB

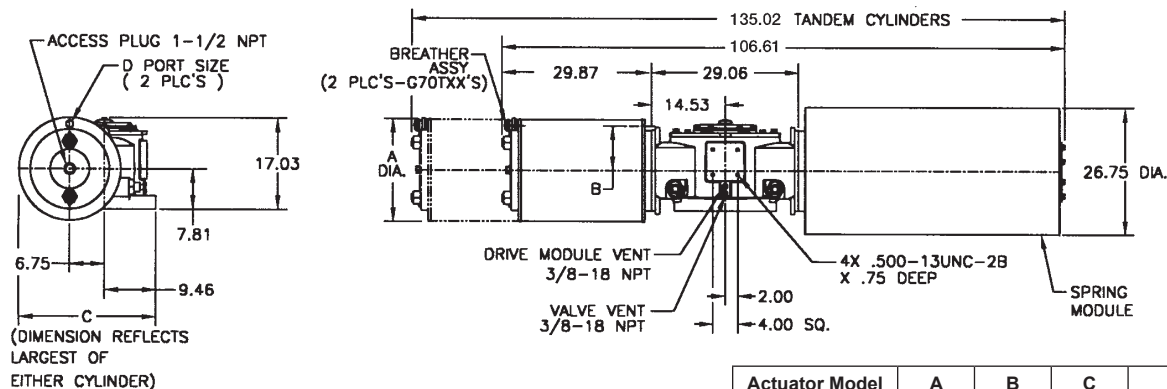
Date: August 2010

G-Series

Dimensions – (Pneumatic) In.

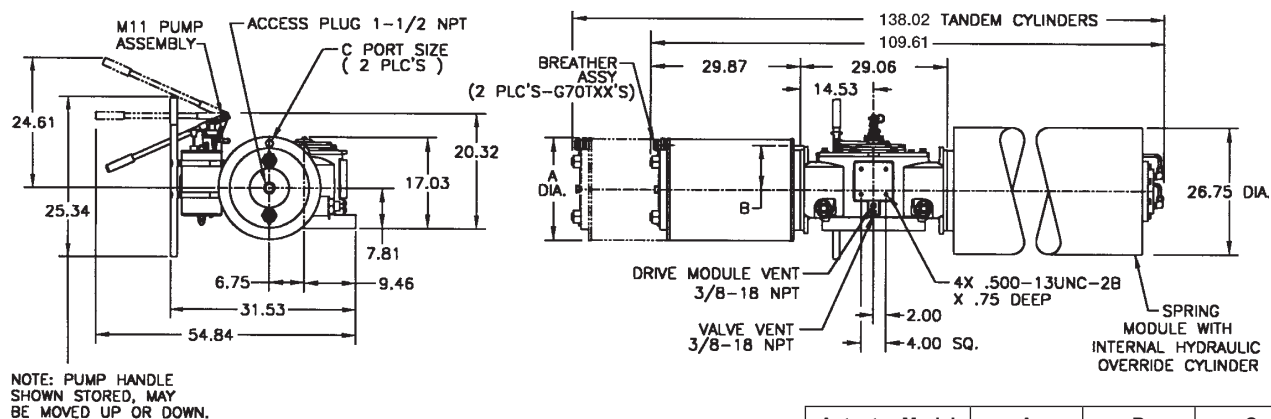
Spring-Return Actuators

G70XX-SR or G70TXX-SR (CW Model Shown)



Actuator Model	A	B	C	D
G7020-SR	20.25	8.75	29.59	3/4 NPT
G7024-SR	24.25	9.63	29.59	1 NPT
G7028-SR	29.00	11.25	30.71	1-1/2 NPT
G7032-SR	33.00	14.00	32.71	1-1/2 NPT
G7036-SR	37.25	16.00	34.84	1-1/2 NPT
G70T28-SR	29.00	11.25	30.71	1-1/2 NPT

G70XX-SR-M11 or G70TXX-SR-M11 (CW Model Shown)



Actuator Model	A	B	C
G7020-SR-M11	20.25	8.75	3/4 NPT
G7024-SR-M11	24.25	9.63	1 NPT
G7028-SR-M11	29.00	11.25	1-1/2 NPT
G7032-SR-M11	33.00	14.00	1-1/2 NPT
G7036-SR-M11	37.25	16.00	1-1/2 NPT
G70T28-SR-M11	29.00	11.25	1-1/2 NPT

Note: Not Certified dimensional drawings. Such drawings available on request.
Contact factory with correct model designation and serial number.
All dimensions are expressed in inches.

BETTIS

www.Bettis.com

Copyright © Emerson Process Management. The information in this document is subject to change without notice.
Updated data sheets can be obtained from our website www.bettis.com or from your nearest Valve Automation Center.
USA: +1 281 727 5300 Europe: +31 74 256 1010 Asia-Pacific: +65 6501 4600



EMERSON
Process Management

Data sheet

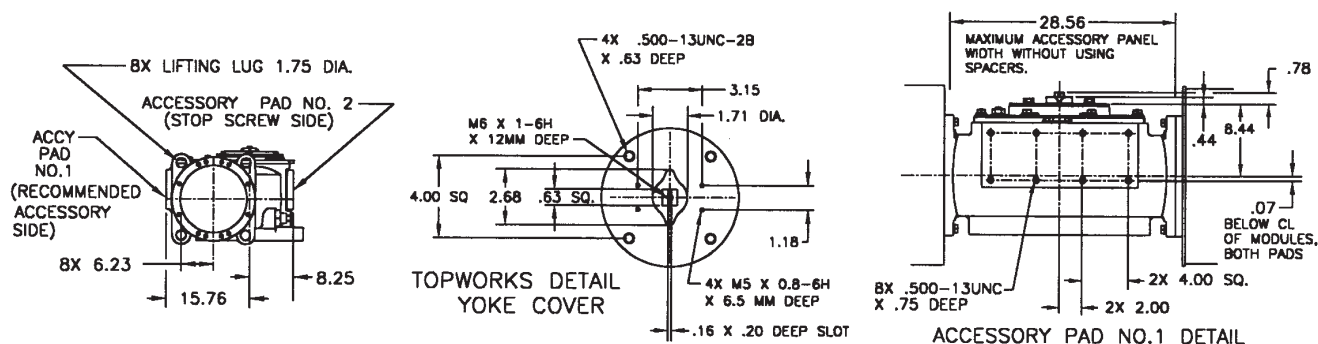
Sheet No.: GPI 3.24 RevB

Date: August 2010

G-Series

Dimensions – (Pneumatic) In.

Spring-Return Actuators Lug/Accessory Details



Note: Not Certified dimensional drawings. Such drawings available on request.
Contact factory with correct model designation and serial number.
All dimensions are expressed in inches.

BETTIS[™]

www.Bettis.com

Copyright © Emerson Process Management. The information in this document is subject to change without notice.
Updated data sheets can be obtained from our website www.bettis.com or from your nearest Valve Automation Center.
USA: +1 281 727 5300 Europe: +31 74 256 1010 Asia-Pacific: +65 6501 4600


EMERSON[™]
Process Management

Data sheet

Sheet No.: GPI 3.25 RevB

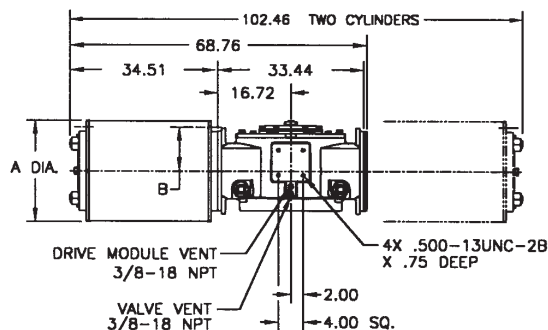
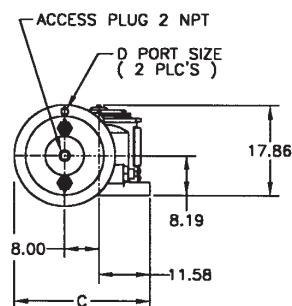
Date: August 2010

G-Series

Dimensions – (Pneumatic) In.

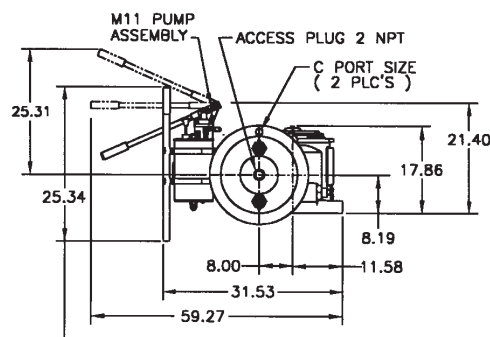
Double-Acting Actuators

G80XX or G802XX (CW Model Shown)

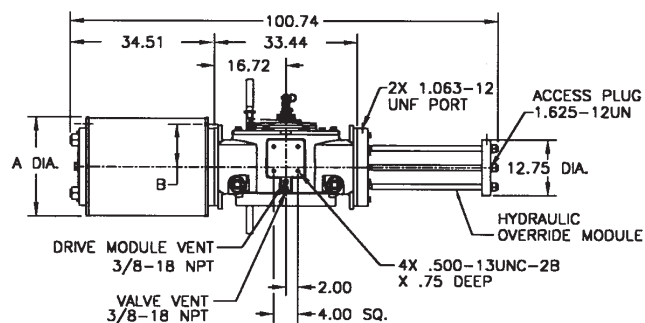


Actuator Model	A	B	C	D
G8024	24.25	9.63	31.71	1 NPT
G8028	29.00	12.38	34.08	1-1/2 NPT
G8032	33.00	13.38	36.08	1-1/2 NPT
G8036	37.25	16.00	38.21	1-1/2 NPT
G8040	41.25	18.00	40.21	2 NPT
G80232	33.00	13.38	36.08	1-1/2 NPT
G80236	37.25	16.00	38.21	1-1/2 NPT

G80XX-M11 (CW Model Shown)



NOTE: PUMP HANDLE SHOWN STORED, MAY BE MOVED UP OR DOWN.



Actuator Model	A	B	C
G8024-M11	24.25	9.63	1 NPT
G8028-M11	29.00	12.38	1-1/2 NPT
G8032-M11	33.00	13.38	1-1/2 NPT
G8036-M11	37.25	16.00	1-1/2 NPT
G8040-M11	41.25	18.00	2 NPT

Note: Not Certified dimensional drawings. Such drawings available on request.
Contact factory with correct model designation and serial number.
All dimensions are expressed in inches.

BETTIS

www.Bettis.com

Copyright © Emerson Process Management. The information in this document is subject to change without notice.
Updated data sheets can be obtained from our website www.bettis.com or from your nearest Valve Automation Center.
USA: +1 281 727 5300 Europe: +31 74 256 1010 Asia-Pacific: +65 6501 4600



EMERSON
Process Management

Data sheet

Sheet No.: GPI 3.26 RevB

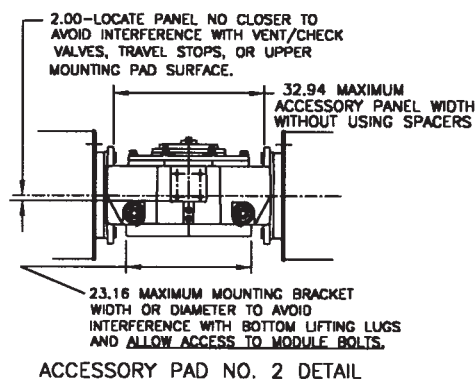
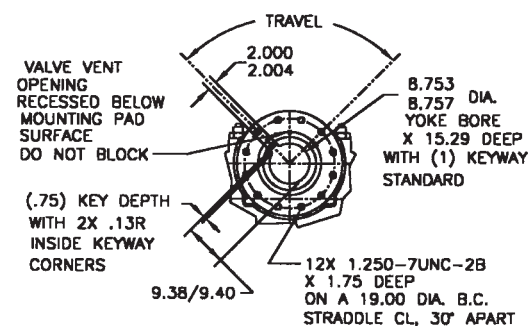
Date: August 2010

G-Series

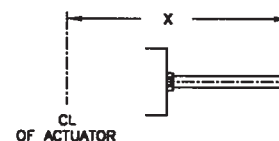
Dimensions – (Pneumatic) In.

Double-Acting Actuators

Valve/Accessory Mounting Details



Adjustable End Stops



	X Extended Travel Stop	X End Stop
Power Module	70.94	54.39
Blind End Cap Module	40.66	24.92
Spring Module	112.04	71.00

Note: Not Certified dimensional drawings. Such drawings available on request.
Contact factory with correct model designation and serial number.
All dimensions are expressed in inches.

BETTIS[™]

www.Bettis.com

Copyright © Emerson Process Management. The information in this document is subject to change without notice.
Updated data sheets can be obtained from our website www.bettis.com or from your nearest Valve Automation Center.
USA: +1 281 727 5300 Europe: +31 74 256 1010 Asia-Pacific: +65 6501 4600


EMERSON[™]
Process Management

Data sheet

Sheet No.: GPI 3.27 RevB

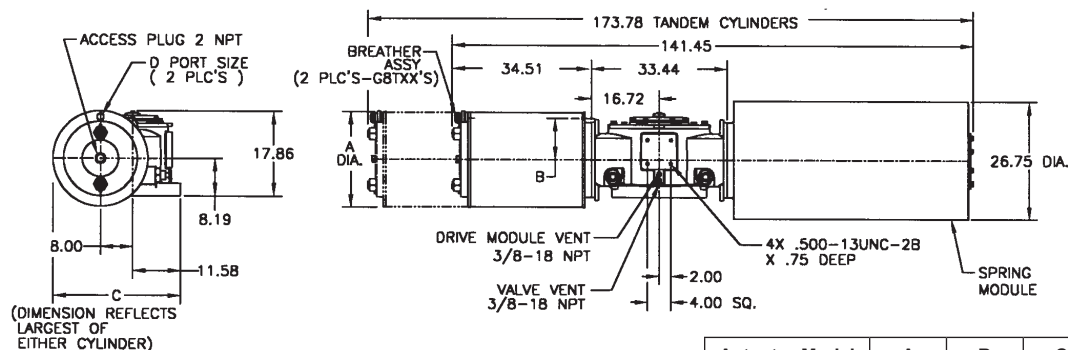
Date: August 2010

G-Series

Dimensions – (Pneumatic) In.

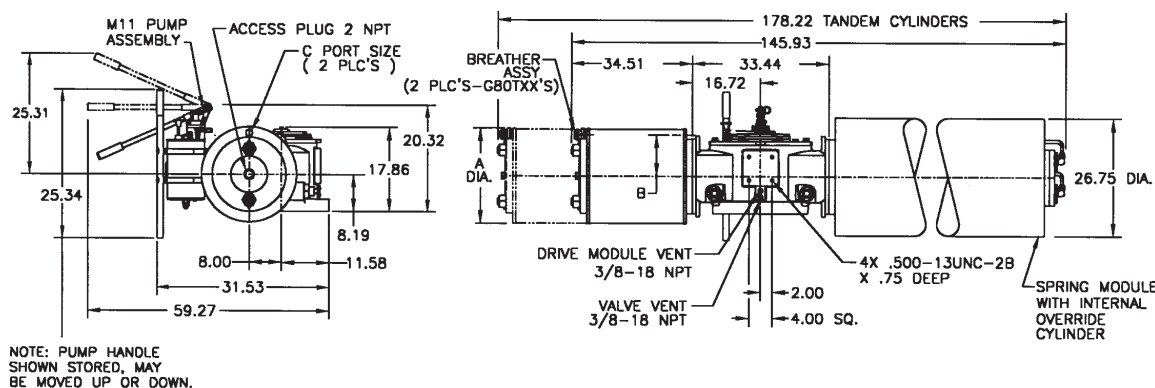
Spring-Return Actuators

G80XX-SR or G80TXX-SR (CW Model Shown)



Actuator Model	A	B	C	D
G8024-SR	24.25	9.63	32.96	1 NPT
G8028-SR	29.00	12.38	34.08	1-1/2 NPT
G8032-SR	33.00	13.38	36.08	1-1/2 NPT
G8036-SR	37.25	16.00	38.21	1-1/2 NPT
G8040-SR	41.25	18.00	40.21	2 NPT
G80T32-SR	33.00	13.38	36.08	1-1/2 NPT
G80T36-SR	37.25	16.00	38.21	1-1/2 NPT

G80XX-SR-M11 or G80TXX-SR-M11 (CW Model Shown)



Actuator Model	A	B	C
G8024-SR-M11	24.25	9.63	1 NPT
G8028-SR-M11	29.00	12.38	1-1/2 NPT
G8032-SR-M11	33.00	13.38	1-1/2 NPT
G8036-SR-M11	37.25	16.00	1-1/2 NPT
G8040-SR-M11	41.25	18.00	2 NPT
G80T32-SR-M11	33.00	13.38	1-1/2 NPT
G80T36-SR-M11	37.25	16.00	1-1/2 NPT

Note: Not Certified dimensional drawings. Such drawings available on request.
Contact factory with correct model designation and serial number.
All dimensions are expressed in inches.

BETTIS

www.Bettis.com

Copyright © Emerson Process Management. The information in this document is subject to change without notice.
Updated data sheets can be obtained from our website www.bettis.com or from your nearest Valve Automation Center.
USA: +1 281 727 5300 Europe: +31 74 256 1010 Asia-Pacific: +65 6501 4600

EMERSON
Process Management

Data sheet

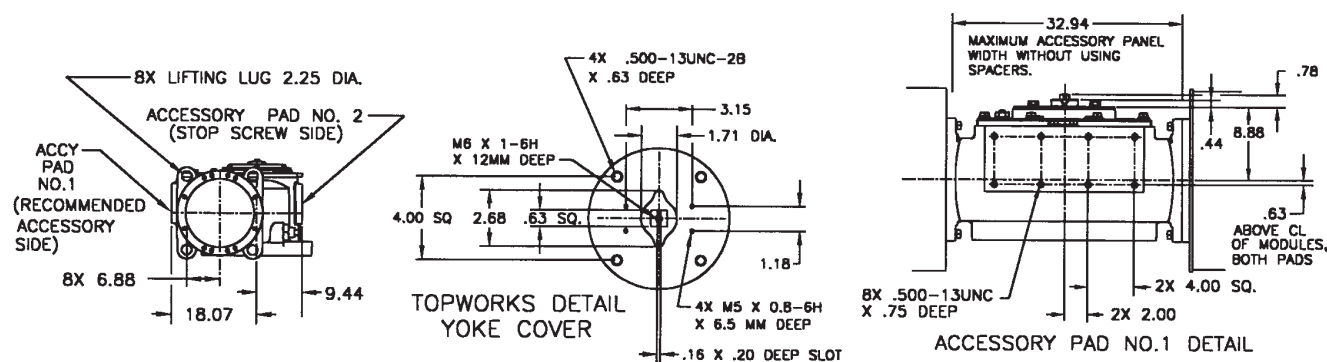
Sheet No.: GPI 3.28 RevB

Date: August 2010

G-Series

Dimensions – (Pneumatic) In.

Spring-Return Actuators Lug/Accessory Details



Note: Not Certified dimensional drawings. Such drawings available on request.
Contact factory with correct model designation and serial number.
All dimensions are expressed in inches.

BETTIS[™]

www.Bettis.com

Copyright © Emerson Process Management. The information in this document is subject to change without notice.
Updated data sheets can be obtained from our website www.bettis.com or from your nearest Valve Automation Center.
USA: +1 281 727 5300 Europe: +31 74 256 1010 Asia-Pacific: +65 6501 4600


EMERSON[™]
Process Management

Data sheet

Sheet No.: GPI 3.29 RevB

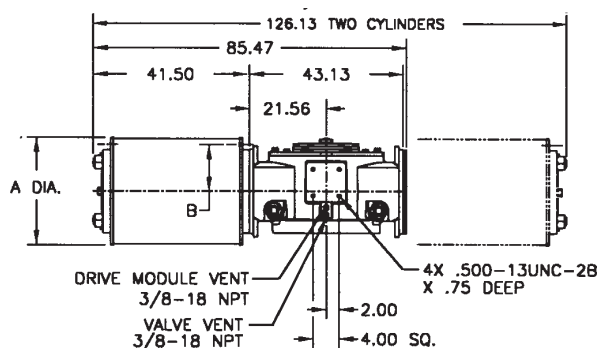
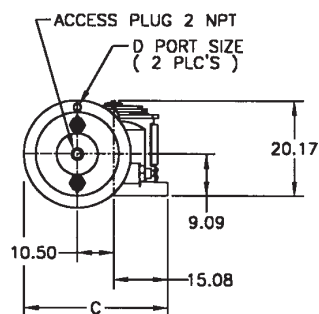
Date: August 2010

G-Series

Dimensions – (Pneumatic) In.

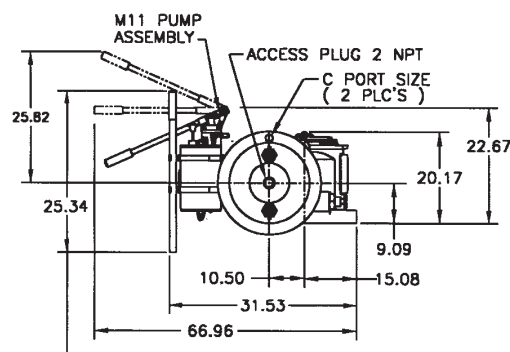
Double-Acting Actuators

G100XX or G1002XX (CW Model Shown)

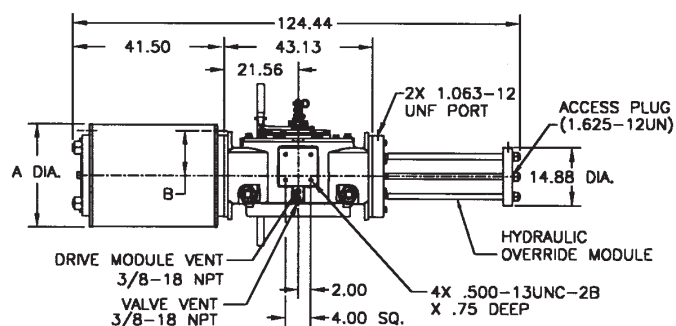


Actuator Model	A	B	C	D
G10028	29.00	12.38	40.08	1-1/2 NPT
G10032	33.00	13.38	42.08	1-1/2 NPT
G10036	37.25	16.00	44.21	2 NPT
G10040	41.25	18.00	46.21	2 NPT
G100232	33.00	13.38	42.08	1-1/2 NPT
G100236	37.25	16.00	44.21	2 NPT
G100240	41.25	18.00	46.21	2 NPT

G100XX-M11 (CW Model Shown)



NOTE: PUMP HANDLE SHOWN STORED, MAY BE MOVED UP OR DOWN.



Actuator Model	A	B	C
G10028-M11	29.00	12.38	1-1/2 NPT
G10032-M11	33.00	13.38	1-1/2 NPT
G10036-M11	37.25	16.00	2 NPT
G10040-M11	41.25	18.00	2 NPT

Note: Not Certified dimensional drawings. Such drawings available on request.
Contact factory with correct model designation and serial number.
All dimensions are expressed in inches.

BETTIS

www.Bettis.com

Copyright © Emerson Process Management. The information in this document is subject to change without notice.
Updated data sheets can be obtained from our website www.bettis.com or from your nearest Valve Automation Center.
USA: +1 281 727 5300 Europe: +31 74 256 1010 Asia-Pacific: +65 6501 4600



EMERSON
Process Management

Data sheet

Sheet No.: GPI 3.30 RevB

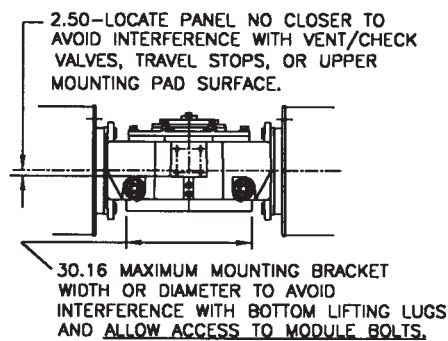
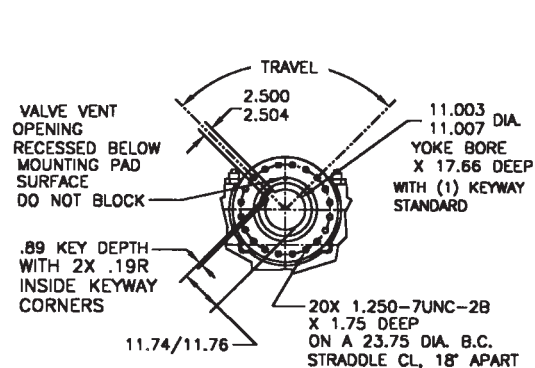
Date: August 2010

G-Series

Dimensions – (Pneumatic) In.

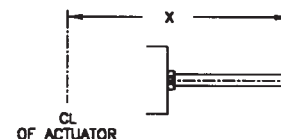
Double-Acting Actuators

Valve/Accessory Mounting Details



ACCESSORY PAD NO. 2 DETAIL

Adjustable End Stops



	X Extended Travel Stop	X End Stop
Power Module	89.08	80.08
Blind End Cap Module	C/F	C/F
Spring Module	C/F	C/F

C/F Consult Factory

Note: Not Certified dimensional drawings. Such drawings available on request.
Contact factory with correct model designation and serial number.
All dimensions are expressed in inches.

BETTIS™

www.Bettis.com

Copyright © Emerson Process Management. The information in this document is subject to change without notice.
Updated data sheets can be obtained from our website www.bettis.com or from your nearest Valve Automation Center.
USA: +1 281 727 5300 Europe: +31 74 256 1010 Asia-Pacific: +65 6501 4600

EMERSON™

Process Management

Data sheet

Sheet No.: GPI 3.31 RevB

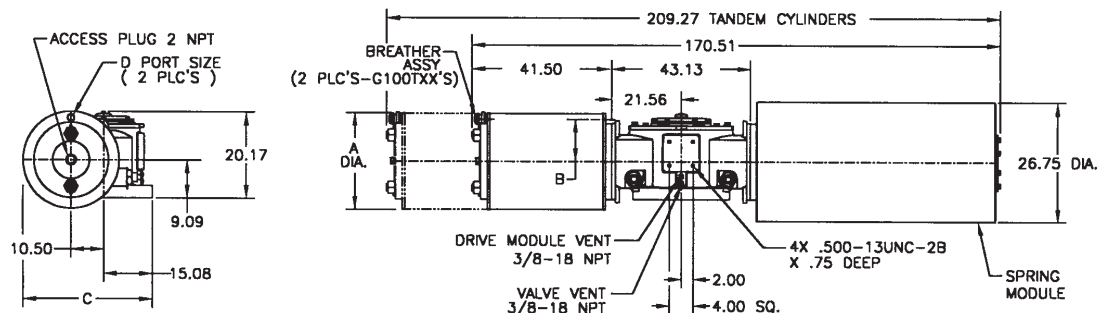
Date: August 2010

G-Series

Dimensions – (Pneumatic) In.

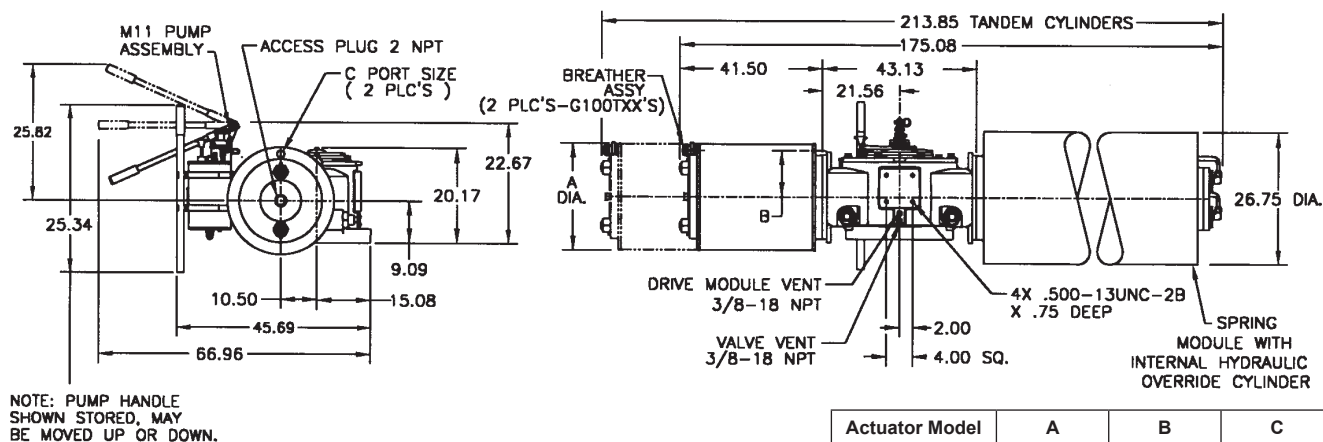
Spring-Return Actuators

G100XX-SR or G100TXX-SR (CW Model Shown)



Actuator Model	A	B	C	D
G10028-SR	29.00	12.38	40.08	1-1/2 NPT
G10032-SR	33.00	13.38	42.08	1-1/2 NPT
G10036-SR	37.25	16.00	44.21	2 NPT
G10040-SR	41.25	18.00	46.21	2 NPT
G100T32-SR	33.00	13.38	42.08	1-1/2 NPT
G100T36-SR	37.25	16.00	44.21	2 NPT
G100T40-SR	41.25	18.00	46.21	2 NPT

G100XX-SR-M11 or G100TXX-SR-M11 (CW Model Shown)



Actuator Model	A	B	C
G10028-SR-M11	29.00	12.38	1-1/2 NPT
G10032-SR-M11	33.00	13.38	1-1/2 NPT
G10036-SR-M11	37.25	16.00	2 NPT
G10040-SR-M11	41.25	18.00	2 NPT
G100T32-SR-M11	33.00	13.38	1-1/2 NPT
G100T36-SR-M11	37.25	16.00	2 NPT
G100T40-SR-M11	41.25	18.00	2 NPT

Note: Not Certified dimensional drawings. Such drawings available on request.
Contact factory with correct model designation and serial number.
All dimensions are expressed in inches.

BETTIS

www.Bettis.com

Copyright © Emerson Process Management. The information in this document is subject to change without notice.
Updated data sheets can be obtained from our website www.bettis.com or from your nearest Valve Automation Center.
USA: +1 281 727 5300 Europe: +31 74 256 1010 Asia-Pacific: +65 6501 4600

EMERSON
Process Management

Data sheet

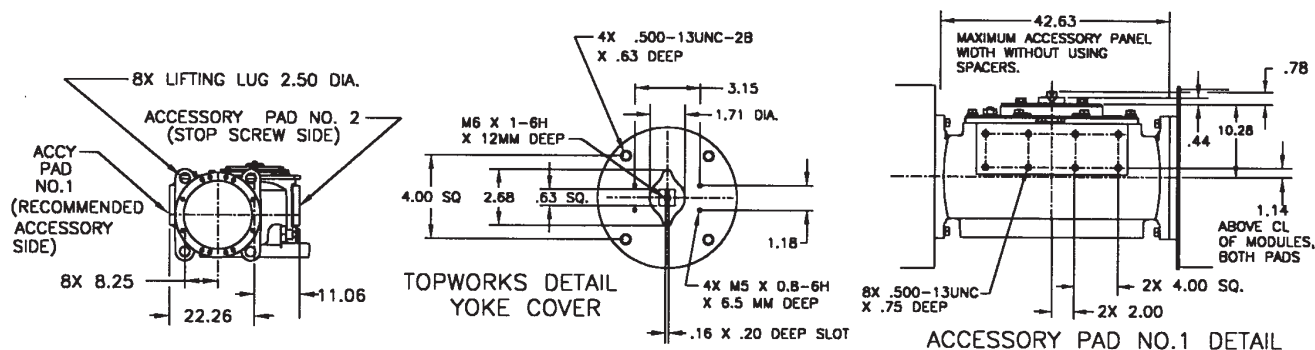
Sheet No.: GPI 3.32 RevB

Date: August 2010

G-Series

Dimensions – (Pneumatic) In.

Spring-Return Actuators Lug/Accessory Details



Note: Not Certified dimensional drawings. Such drawings available on request.
Contact factory with correct model designation and serial number.
All dimensions are expressed in inches.

BETTIS[™]

www.Bettis.com

Copyright © Emerson Process Management. The information in this document is subject to change without notice.
Updated data sheets can be obtained from our website www.bettis.com or from your nearest Valve Automation Center.
USA: +1 281 727 5300 Europe: +31 74 256 1010 Asia-Pacific: +65 6501 4600


EMERSON[™]
Process Management